



ABGC 2011 Annual Business Meeting

October 30, 2011



Agenda

- Welcome & Introductions
- Nominating Committee Report
- Secretary/Treasurer's Report
- Accreditation Committee Report
- Credentials Committee Report
- New Business
- Open for Questions



The 2011 ABGC BOD





Thank You!

Heather Hampel, MS, CGC



Cathi Rubin-Franklin, MS, CGC





Nominating Committee Report

- 2011 Nominating Committee
- 2012 Election Results
- New Directors



2011 Nominating Committee

- Kelly Ormond, MS, CGC (Chair)
- Susan M. Hahn, MS, CGC (Board Liaison)
- Melissa Dempsey, MS, CGC
- Elizabeth Varga, MS, CGC
- Jeanne Homer, MS, CGC
- Andrea Sellers, MS, CGC



Election Returns

Ballots Distributed Electronically	2,081
Ballots Cast	784 (37.7%)



2012 Election Results

Congratulations to the new members of the ABGC Board of Directors:

– Anne Madeo, MS, CGC



– Sarah Noblin, MS, CGC





Beverly M. Yashar, MS, PhD, CGC

2011 Secretary/Treasurer

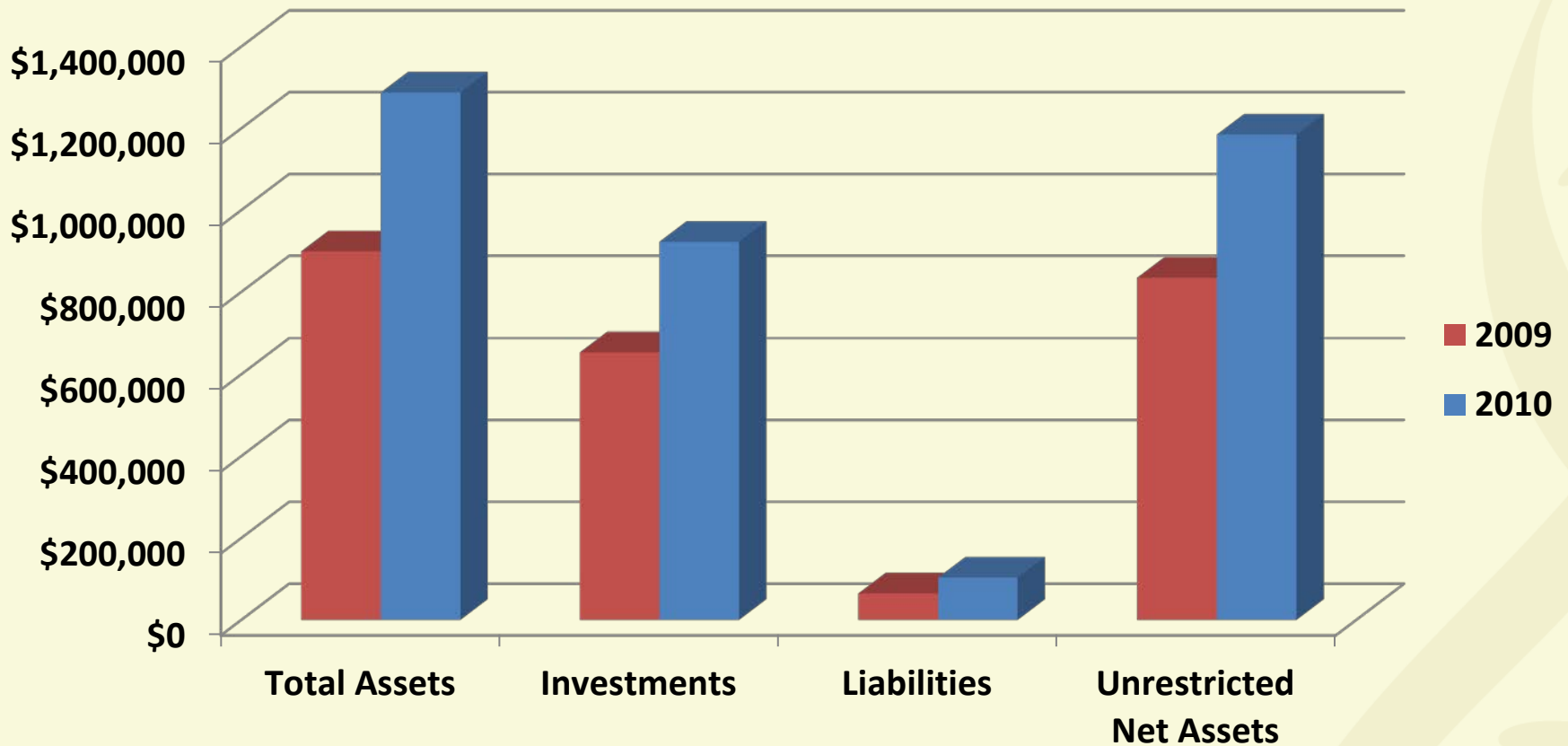


Secretary/Treasurer's Report

- 2010 Audited Financial Statements
- Revenues
- Expenses

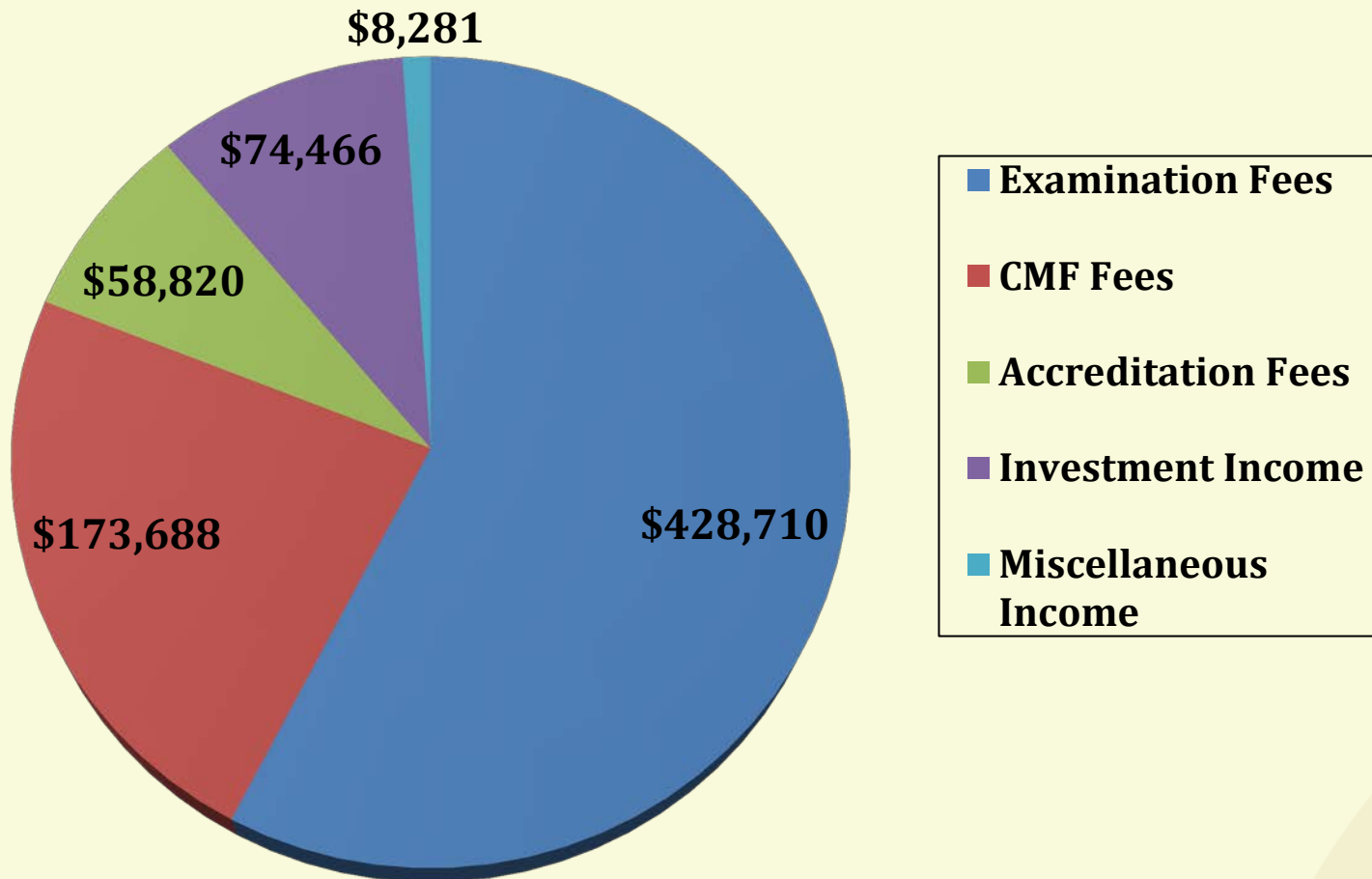


Audited Financial Statements (2009 & 2010)



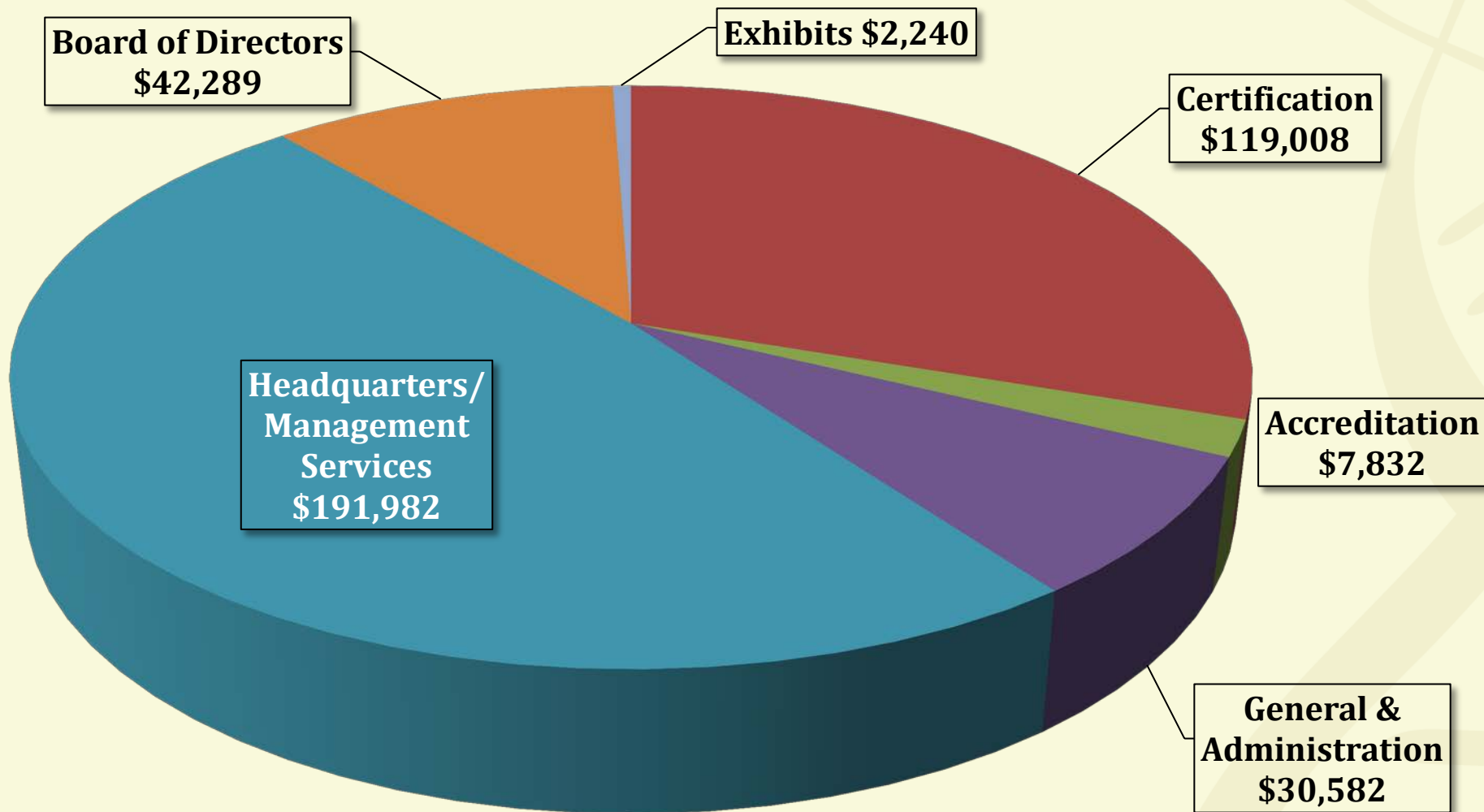


2010 Revenue





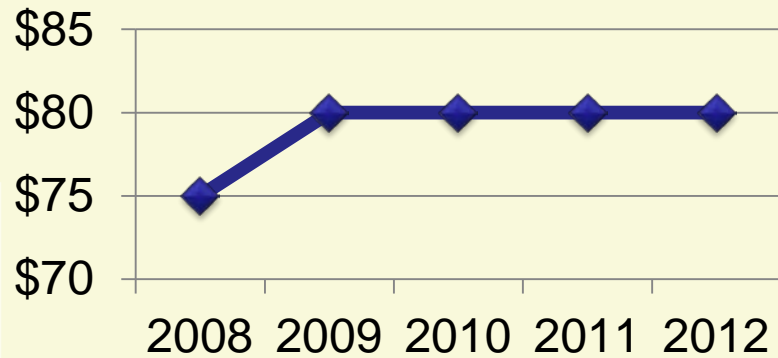
2010 Expenses



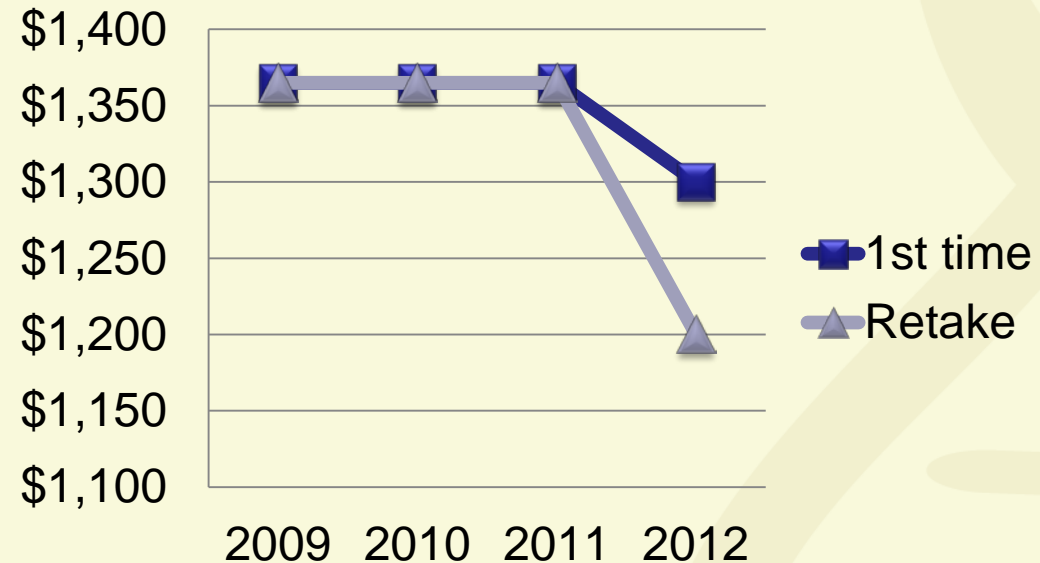


Certification Maintenance Fees (CMFs) & Examination Fees

CMFs



Examination Fees





2011 Finance Committee

- Beverly Yashar, MS, PhD, CGC (Chair)
- Troy Becker, MS, CGC
- Heather Hampel, MS, CGC
- Debra Lochner Doyle, MS, CGC
- Carin Yates, MS, CGC



Janice Berliner, MS, CGC

2011 Accreditation Chair



Accreditation Committee

- Programs accredited
- Separation status
- Required criteria revisions
- Practice-Based Competencies (PBC) review



Accreditation Report

- One New Program Accredited in 2011
 - Emory University
- Six Programs Reaccredited in 2011
 - Sarah Lawrence College
 - University of Colorado
 - University of Pittsburgh
 - Case Western University
 - California State Univ. at Stanislaus
 - Stanford University



Due for Reaccreditation in 2012

- University of California Irvine
- Univ. of North Carolina at Greensboro
- Howard University
- University of Wisconsin



2011 Accreditation Review Committee

- Holly Peay, MS, CGC (Co-Chair)
- Sarah Noblin, MS, CGC (Co-Chair)
- Robin Bennett, MS, CGC (Board Liaison)
- Cathi Rubin-Franklin, MS, CGC
- Cecelia Bellcross, PhD, CGC
- Stephanie Kieffer, MS, CGC
- Lisa Schwartz, MS, CGC



2011 Site Visitors Committee

- Nancy Hansen, MS, CGC (Co-Chair)
- Kathy Steinhaus-French, MS, CGC (Co-Chair)
- Robin L. Bennett, MS, CGC
- Christina G. Palmer, PhD, CGC



Accreditation Separation

- Reviewing financial models and feasibility
- Developing organizational bylaws and structure
- Reviewing and incorporating industry best practices wherever needed
- Working as a subsidiary organization of ABGC until a complete separation can occur
- Subsidiary separation as early as 2012 and complete separation no later than 2015



Accreditation Separation/ Transition Task Force

- Holly Peay, MS, CGC (Chair)
- Robin Bennett, MS, CGC (Board Liaison)
- Kathy Valverde, MS, CGC (AGCPD Rep)
- Lisa Amacker North, MS, CGC
- Jennifer Fitzpatrick, MS, CGC
- Meredith Weaver, PhD, ScM, CGC



Required Criteria

- Phase I - Evaluation Complete
 - Detailed review
 - Compared with Standards of comparable professions
 - Proposed revisions/recommendations to the Board
- Changed name to more accurately fit description:
Standards of Accreditation



Required Criteria

- **Phase II – In process**
 - Integrate standards into new outline
 - Incorporate new language and Board-approved recommendations
 - Revise application form and process (include Practice-Based Competencies changes)
- **Finalize application**
 - Completion scheduled no later than the first quarter of 2012



Required Criteria Taskforce

- Nancy Steinberg Warren, PhD, CGC (Chair)
- Cecelia Bellcross, PhD, CGC (Board Liaison)
- Cathi Rubin-Franklin, MS, CGC
- Colleen Schmitt, MS, CGC
- Kate Reed, MS, CGC
- Mary Ann Champion, MS, CGC
- Sarah Noblin, MS, CGC
- Sharon Aufox, MS, CGC
- Vera Cherepakho, MS, CGC



Practice-Based Competencies

- Originally developed in 1996
- Last reviewed in 2006
- Board selected a variety of individuals to serve based on the following:
 - Geography
 - Specialty areas
 - Years of practice



Practice-Based Competencies

- PBC Task Force met October 4-5
- Revised competencies are being drafted
- PBC Task Force will discuss revisions again
- Revised competencies will be distributed to Diplomates for comment before being finalized



PBC Task Force

- Jehannine Austin, PhD, CGC
- Rawan Awwad, MS, CGC
- Bonnie Baty, MS, CGC
- Amanda Bergner, MS, CGC
- Stephanie Brewster, MS, CGC
- Lori Erby, ScM, CGC
- Anne Greb, MS, CGC
- Robin Grubs, PhD, CGC
- Gillian Hooker, ScM, CGC



PBC Task Force

- Kelly Ormond, MS, CGC
- Christina Palmer, PhD, CGC
- Liz Petty, MD, ABMG
- Claire Singletary, MS, CGC
- Matthew J. Thomas, ScM, CGC
- Helga Toriello, PhD, FACMG
- Wendy Uhlmann, MS, CGC
- Carol S. Walton, MS, CGC
- Cathi Rubin-Franklin, MS, CGC (Board Liaison)
- Deb Lochner Doyle, MS, CGC (Facilitator)



Heather Hampel, MS, CGC

Credentials Committee Chair

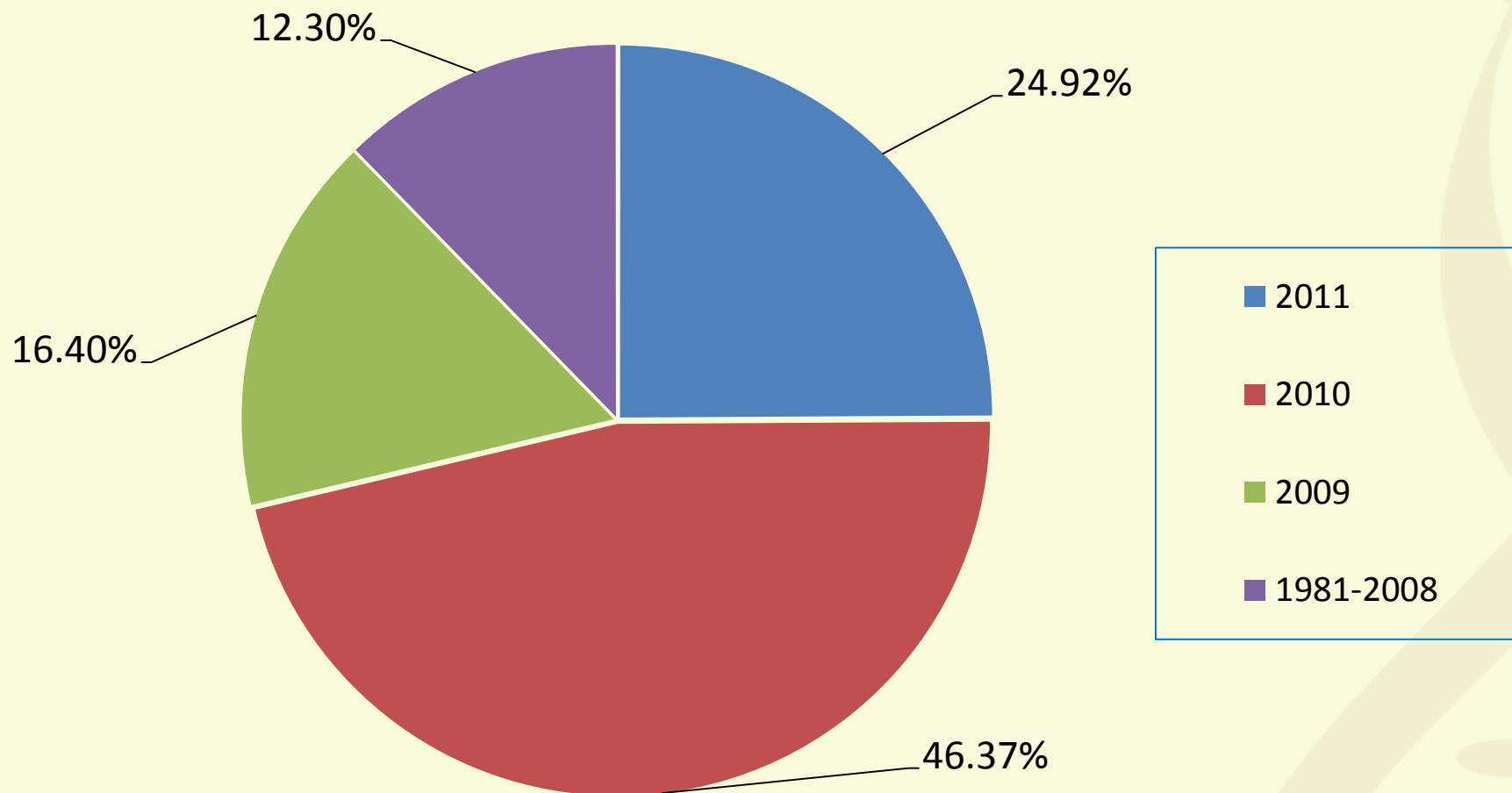


Thank You to our 2011 Certification Exam Committee!

- Erynn Gordon, MS, CGC (Co-Chair)
- Bronson Riley, MS, CGC (Co-Chair)
- Catherine A. Fine, MS, CGC
- Susan E. Hahn, MS, CGC
- Jacquelyn Halliday, MS, CGC
- Ana Morales, MS, CGC
- Myra Roche, MS, CGC
- Helga Toriello, PhD, FACMG
- Cate Walsh Vockley, MS, CGC
- Elizabeth Wood Denne, MS, CGC



2011 Examinees by Graduation Year





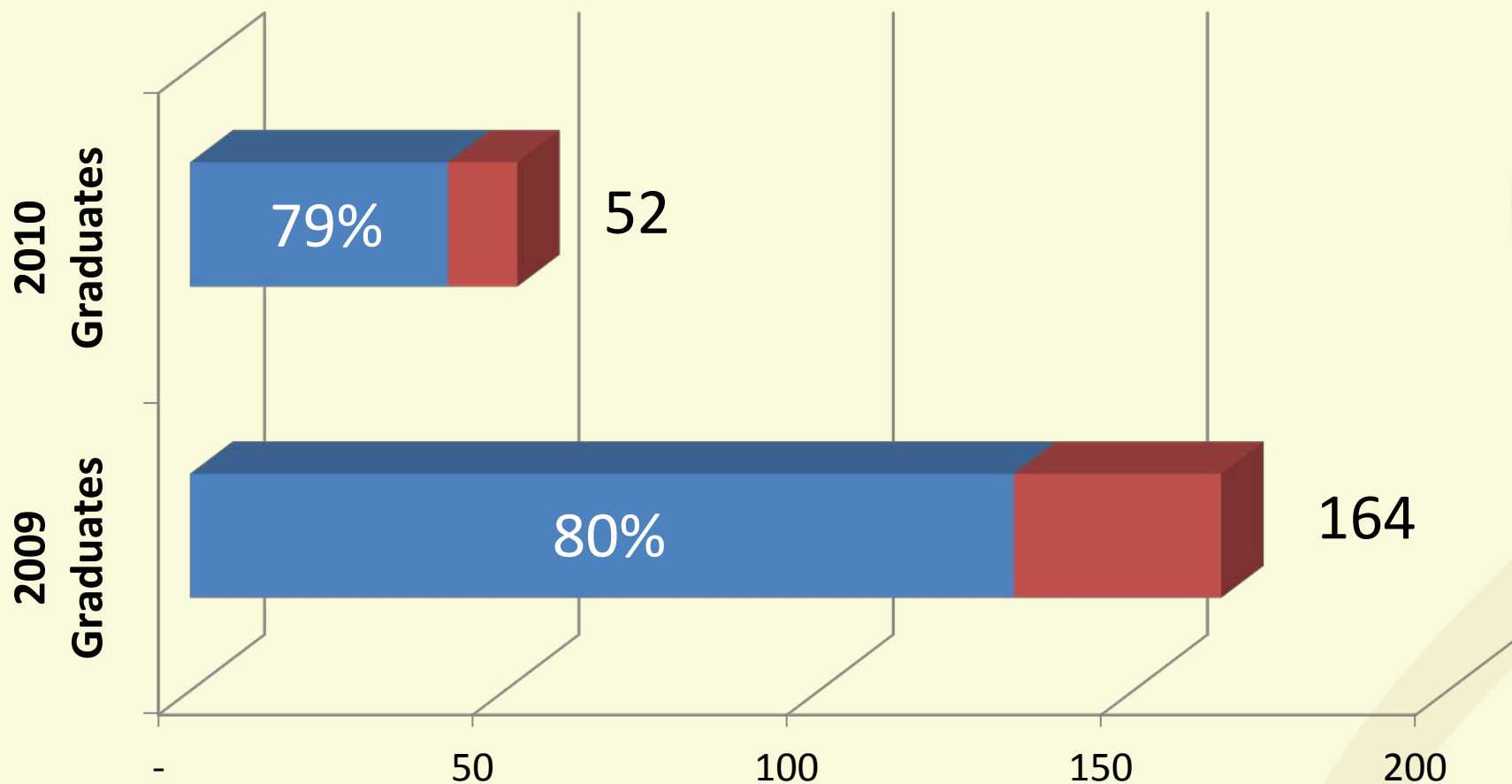
2011 Examinees = 316

Eligibility Route	# of Candidates
First-time Examinees Graduating after October 1, 2008	239
Repeat Examinees	57
Examinees who Failed to Achieve Certification by 2007 and Did Not Establish ACS for 2009 with a New Logbook	13
Examinees Who Failed to Achieve Certification in 2007, Established ACS in 2009 with a New Logbook, and Didn't Achieve Certification in 2009, 2010 and/or 2011	3
IGCCE Approved Applicants	3
Former ABGC Diplomates Whose Time-limited Certification has Lapsed	1
Examinees Required to Obtain 5 CEUs	0
TOTAL	316



New Graduate Testing Trends

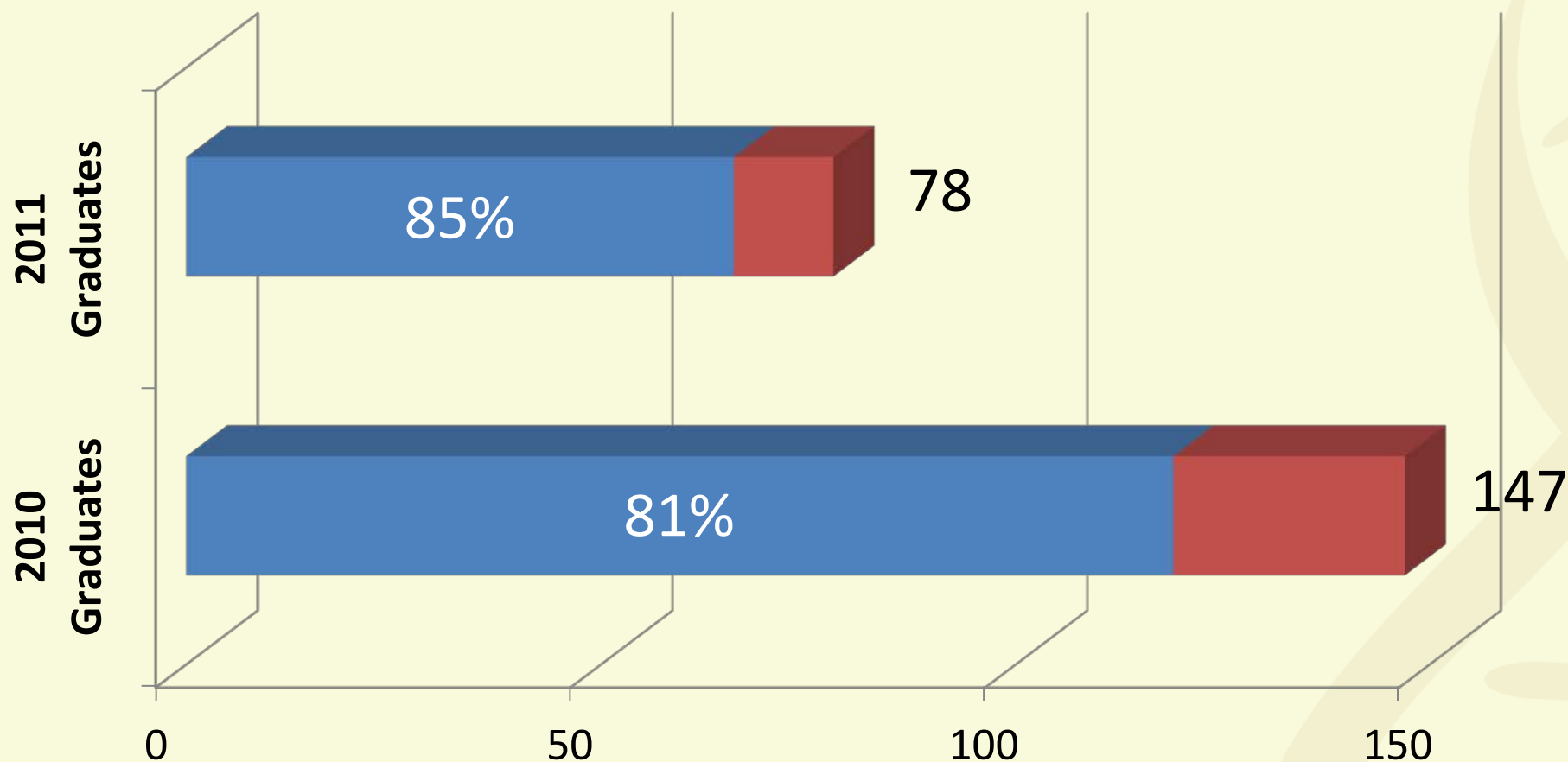
2010 Examination Candidates





New Graduate Testing Trends

2011 Examination Candidates





Practice Analysis Advisory Committee

- Beverly Yashar, PhD, MS (Chair)
- Shari Baldinger-Douglas, MS, CGC
- Melissa Gilstrap, MS, CGC
- Kelly Knickelbein, MS, CGC
- Katrina Merrion, MS, CGC
- Elizabeth Platt, MS, CGC
- Darlene Riethmaier, MS, CGC
- Bronson Riley, MS, CGC
- Andrea Sellers, MS, CGC
- Catherine Walsh Vockley, MS, CGC
- Mary Ann Whalen Champion, MS, CGC



Practice Analysis Results

- Response Rate = 35.5%
 - 2,820 electronic invitations sent
 - 1,002 usable responses received
- Detailed Content Outline posted to website www.abgc.net
- One new major content domain for Communication



2012 Certification Exam Fees & Important Dates

- The 2012 *Exam Bulletin* is posted online now!
- Application requires one-time cost of:
 - \$1,300 (new)
 - \$1,200 (reapplicants)
- Application deadline: July 2, 2012
- Testing window: Aug 12– Sept 15, 2012



New Benefits Survey Results

	1. Most Valuable
A practice exam	68.8% (273)
A self assessment exam (Note: This will take longer to deliver/create than the other options)	15.4% (61)
Instant scoring	8.8% (35)
Moving the test window	2.0% (8)
Having more than one test window per year	5.0% (20)



Practice Examination

- 100 items
- Available Spring 2012
- Cost
 - \$55 each for genetic counselors
 - \$50 each for groups or institutions
 - \$75 each for non-genetic counselors



Recertification

- Next large cycle due to recertify in **2012**
- CGCs due to recertify in 2012 = 325
- Voluntary recertification strongly encouraged
- Applications are accepted annually
- **Online recertification system in 2012**



Certification Maintenance Fee

- CMF prepays recertification fee
- 2011 fee is \$80
- 2012 fee is \$80



One Revised PAC

- A maximum of one (1.0) PAC per year will be granted to certified genetic counselors for volunteer service to **any** genetics-related organization.
- Effective January 1, 2011, 0.5 PAC will be granted **for 25 hours** of volunteer service.

PAC = Professional Activity Credit



New Business

Debra Lochner Doyle, MS, CGC

2011 President



Accomplishments

- Launched the new website January 1, 2011
- Completed the Practice Analysis
- Developed and implemented the 2011 Examination
- Reaccredited six programs
- Accredited one new program



Works In Progress

- Revising the Required Criteria for training programs
- Revising the PBC
- Developing a Practice Examination
- Building an online recertification system
- Separating certification and accreditation
- Developing Clinical Doctorate Standards



Clinical Doctorate

- Appoint a task force to determine the criteria for standards of accreditation for educational programs at the doctorate level
- Hold a summit by 2013 with the purpose of requiring summit participants to make a decision for the profession



Other Milestones

- Invited to China





Amazing Volunteer Efforts!!

- We had 61 committee and task force members
- We had 33 item writers
- We had 403 potential and recent examinee survey respondents
- We had 1,002 Practice Analysis survey respondents



Communications Committee

- Leigha Senter-Jamieson, MS, CGC (Chair)
- Janice Berliner, MS, CGC (Board Liaison)
- Amanda Carre, MS, CGC
- Patricia Devers, MS, CGC
- Jennifer Eichmeyer, MS, CGC
- Christina Fels, MS, CGC



2012 Officers

- Erynn Gordon, MS, CGC, President
- Beverly Yashar, MS, PhD, CGC, Secretary/
Treasurer
- Cecelia Bellcross, MS, CGC, Accreditation
Chair
- Debra Lochner Doyle, MS, CGC, Credentials
Chair



Thank you!

abgc.net